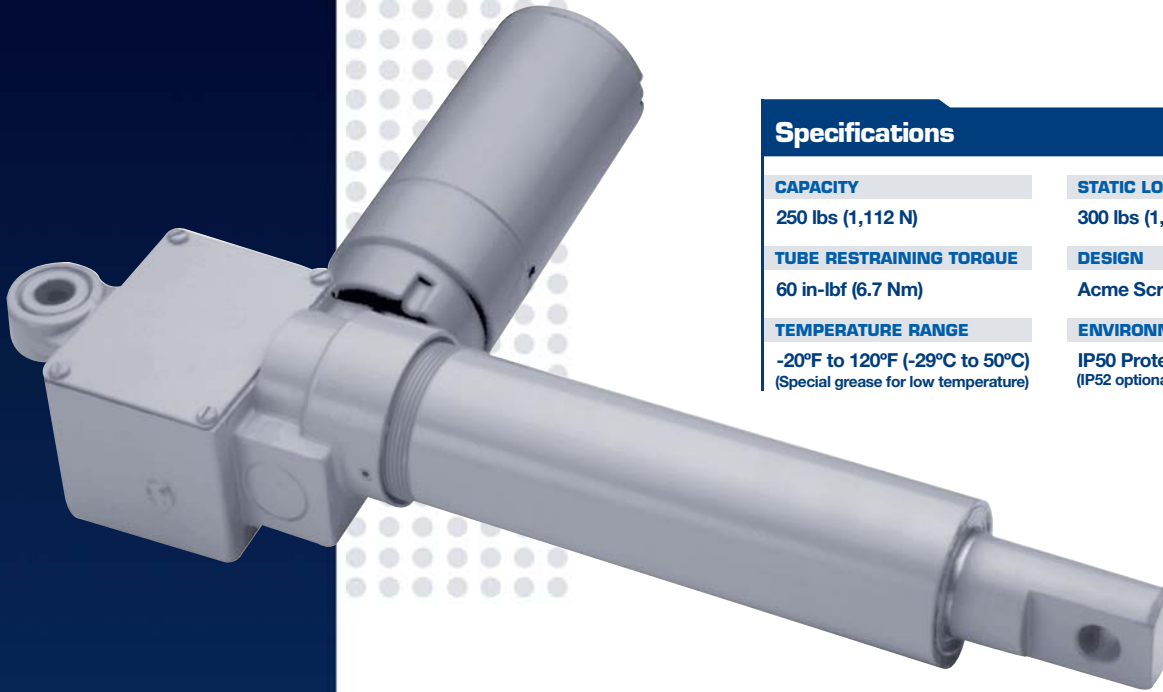


HMPD SERIES

With Limit Switch

250 lbs

1,112 N



Specifications

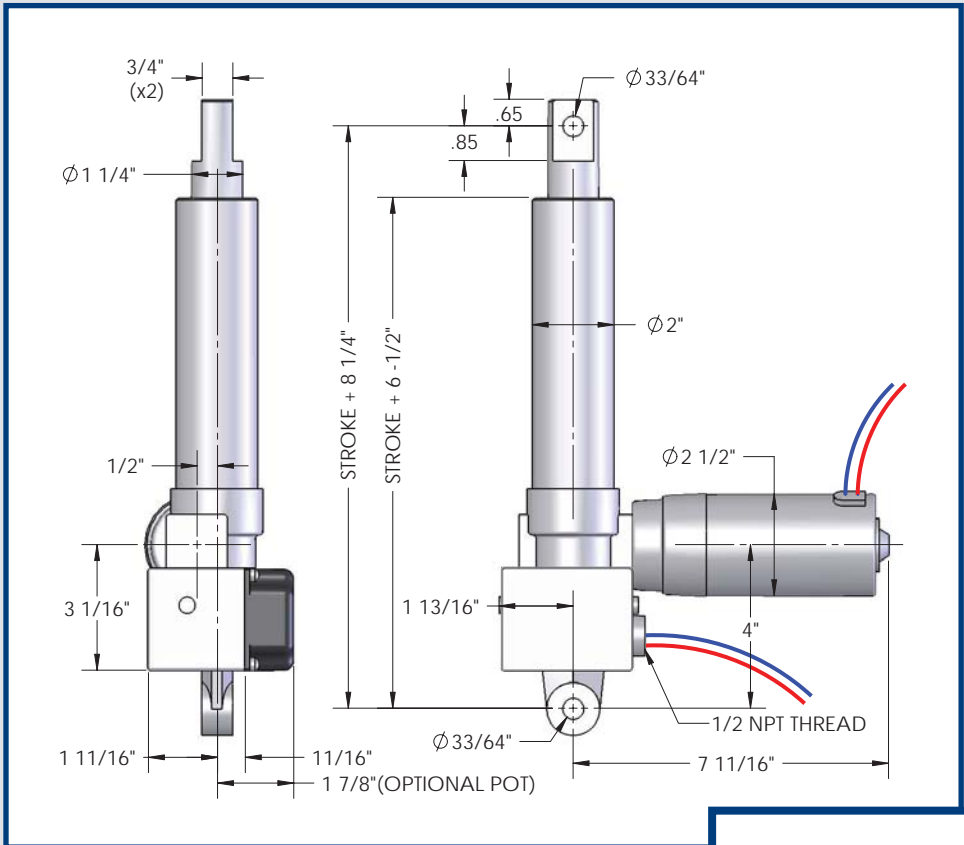
CAPACITY	STATIC LOAD
250 lbs (1,112 N)	300 lbs (1,332 N)
TUBE RESTRAINING TORQUE	DESIGN
60 in-lbf (6.7 Nm)	Acme Screw
TEMPERATURE RANGE	ENVIRONMENT
-20°F to 120°F (-29°C to 50°C) (Special grease for low temperature)	IP50 Protection standard (IP52 optional)

Features & Benefits

- Heavy duty design for long life in tough applications
- Aluminum housing and outer tube
- Steel translating tube – zinc chromate plated
- Double clevis mounting
- Spring Type Brake
- Internal adjustable limit switches
- Automatic reset thermal overload motor protection

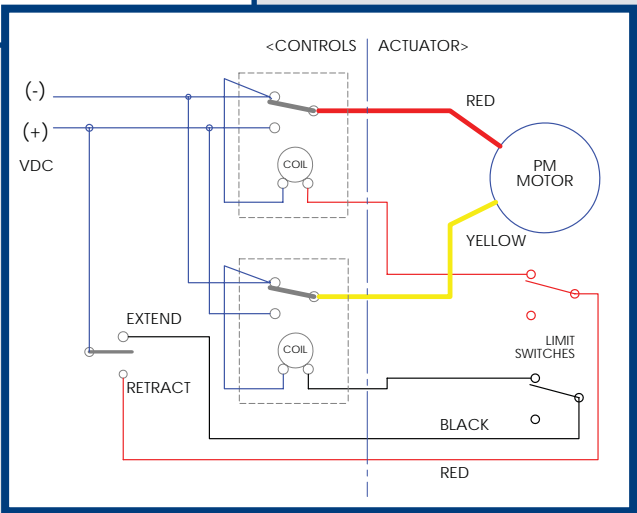
Options

- Potentiometer Feedback (add “P” prefi x)
- Weather Resistant Sealant –IP52 (add “W” prefi x)
- Bellows Boot



Note:

(2) relays are required for DC limit switch models



HMPD Linear Actuator with limit switch - 250 lb (1,112 N) Capacity																
PRODUCT INFORMATION	Part Number	Rated Load		Stroke Length		Retracted Length		Voltage	Current Draw at Rated Load (A)	Speed at Rated Load		Limit Switch	Duty Cycle at Rated Load		Weight	
		lbs	N	in	mm	in	mm			in/s	mm/s		in/h	mm/h	lbs	N
	HMPD3905-3	250	1,112	3	76	11.25	285	12Vdc	28	2	50	Yes	1,250	31,750	10	44.4
HMPD3905-6	6			152	14.25	362	12								53.3	
HMPD3905-12	12			304	20.25	514	14								62.2	
HMPD3905-18	18			457	26.25	666	17								75.6	