

SERIES

SCN12

12 TON (106.7 kN)

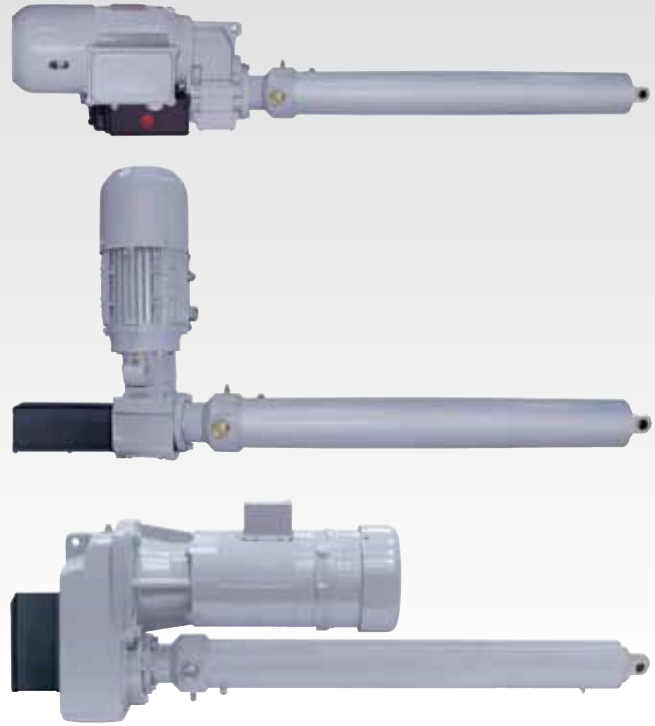
SPEED: Up to 188.5 in/min (4787 mm/min)

BRAKE MOTOR: TEFC 230/460 VAC, 3 ph, 60 Hz

STROKES: Up to 110 in (2794 mm)

TEMPERATURE RANGE: 0°F to 120°F (-18°C to 50°C)*

*For other temperatures please consult the factory

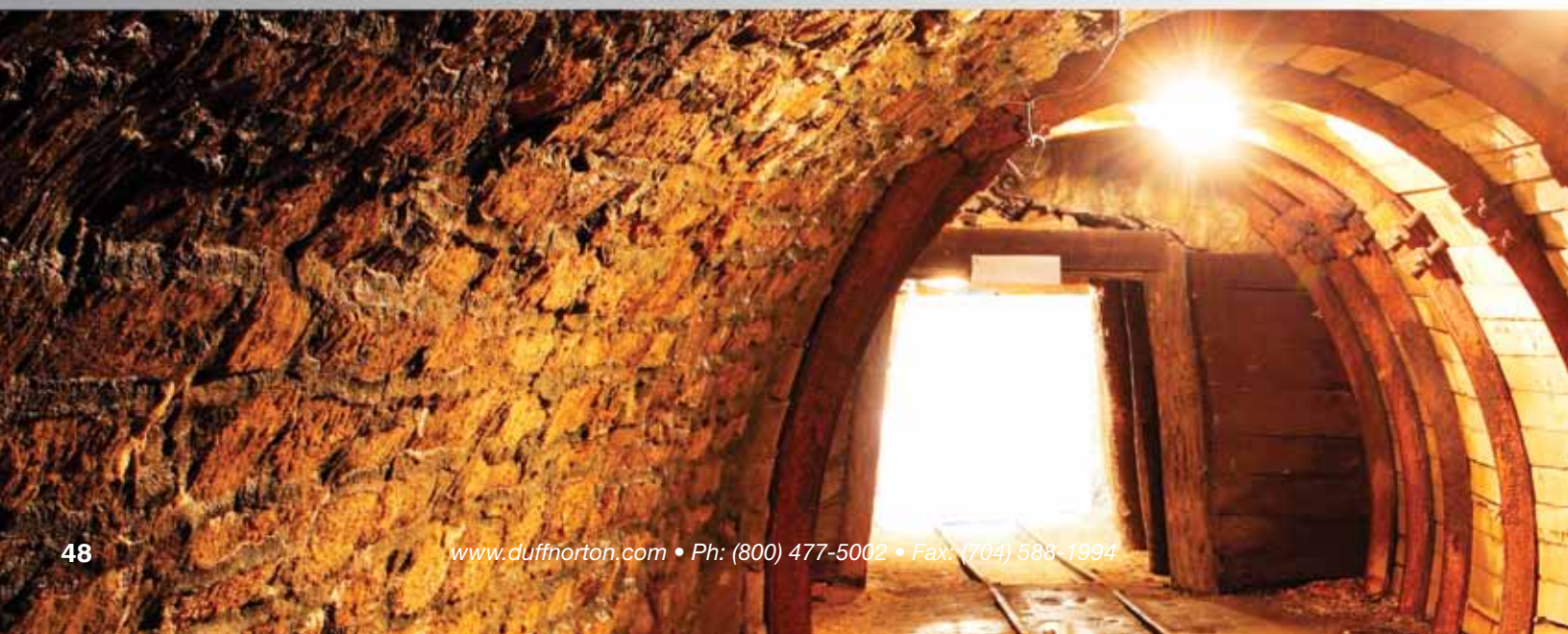


FEATURES & BENEFITS

- Easy to install - reduces installation costs
- Custom designed for your application
- Low maintenance design - easy to maintain after installation
- Long product life expectancy
- Ball screw
- Ductile iron housing
- Chrome plated translating tube
- Adjustable end of stroke limit switches
- Clevis and trunnion mounting
- Motor configuration include: parallel, right angle and OFFSET

OPTIONS

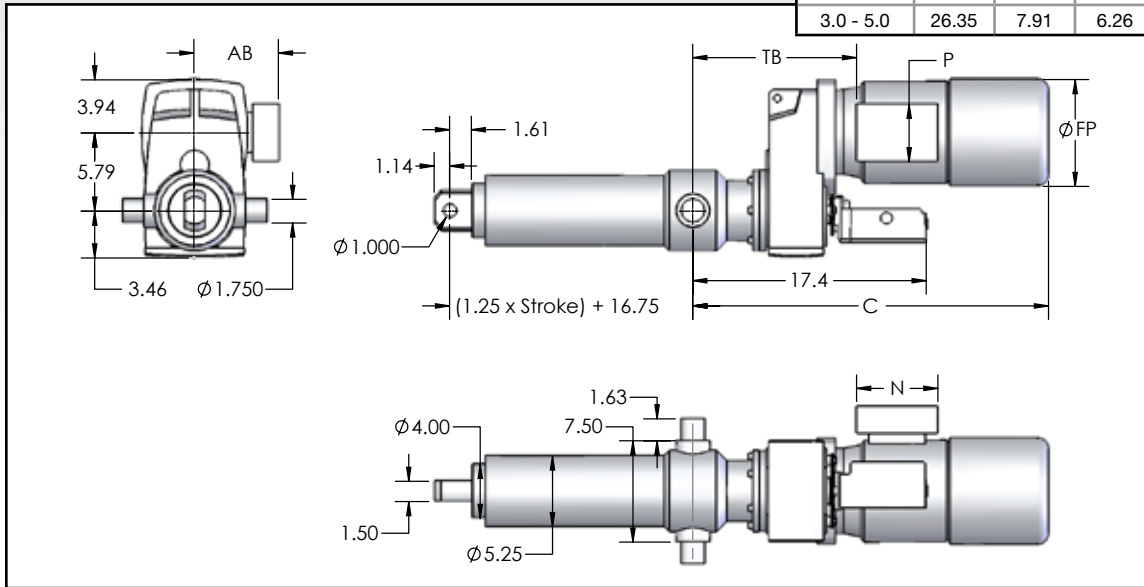
- Food grade component options available
- Explosion proof motor and limit switch (see pages 52-55)
- Product designs for outdoor applications
- Manual override
- Other special packages are available upon your application needs





Motor HP	C	FP	AB	TB	N	P
0.33 - 0.50	25.84	5.71	5.24	11.82	5.20	3.43
0.75 - 1.0	25.92	6.50	5.83	11.70	6.02	4.25
1.5 - 2.0	26.11	7.20	5.85	11.90	6.02	4.25
3.0 - 5.0	26.35	7.91	6.26	12.13	6.02	4.25

OFFSET MOTOR



PRODUCT INFORMATION

Part Number	Rated Load		Standard Stroke Lengths		Retracted Length	Speed		Max Stroke		Motor	
	lbs	N	in	mm	in (mm)	in/min	mm/min	in	mm	HP	kW
NZ12-0451	9305	41,390				188.5	4787	110	2794	5	3.72
NZ12-0572	11,802	52,496				148.6	3774	110	2794	5	3.72
NZ12-0643	13,267	59,012				132.2	3358	110	2794	5	3.72
NZ12-0748	15,433	68,649				113.6	2885	110	2794	5	3.72
NZ12-0837	17,270	76,821				101.6	2581	110	2794	5	3.72
NZ12-0903	18,631	82,874				94.1	2390	107	2717	5	3.72
NZ12-1015	20,942	93,151				83.7	2127	101	2565	5	3.72
NZ12-1181	14,620	65,031				72.0	1828	110	2794	3	2.23
NZ12-1323	16,378	72,850				64.2	1631	110	2794	3	2.23
NZ12-1653	20,464	91,022				51.4	1306	102	2591	3	2.23
NZ12-1851	15,277	67,950				45.9	1116	110	2794	2	1.49
NZ12-2190	18,074	80,394				38.8	986	109	2769	2	1.49
NZ12-2396	19,774	87,959				35.5	902	104	2641	2	1.49
NZ12-2497	20,608	91,664				34.0	865	102	2591	2	1.49
NZ12-2683	16,607	73,869				31.7	805	110	2794	1-1/2	1.12
NZ12-2965	18,353	81,635	6, 12, 18, 24, 36	152, 304, 457, 609, 914	16.75 (425) + (1.25 x Stroke)	28.7	729	108	2743	1/2	0.37
NZ12-3132	19,331	85,985				27.2	691	105	2667	1/2	0.37
NZ12-3654	22,618	100,603				23.3	591	97	2464	1-1/2	1.12
NZ12-3718	15,343	68,244				22.9	581	110	2794	1	0.74
NZ12-4511	18,615	82,803				18.8	477	108	2743	1	0.74
NZ12-5396	22,267	99,044				15.8	401	98	2489	1	0.74
NZ12-6383	24,000	106,753				13.3	338	89	2261	1	0.74
NZ12-6967	24,000	106,752				12.2	310	85	2159	1	0.74
NZ12-8242	24,000	106,752				10.3	262	91	2311	3/4	0.56
NZ12-10098	24,000	106,753				8.4	213	81	2057	3/4	0.56
NZ12-10407	24,000	106,752				8.2	207	80	2032	3/4	0.56
NZ12-12751	24,000	106,752				6.7	169	89	2261	1/2	0.37
NZ12-13186	24,000	106,753				6.4	163	88	2235	1/2	0.37
NZ12-14996	24,000	106,752				5.7	144	82	2082	1/2	0.37
NZ12-18511	24,000	106,752				4.6	117	91	2311	1/3	0.25
NZ12-23611	24,000	106,752				3.6	91	80	2032	1/3	0.25
NZ12-27627	24,000	106,752				3.1	78	85	2159	1/4	0.19

Consult the factory for additional speeds and capacities. Stroke lengths are available in 1 inch increments, please contact the factory for details.

SERIES

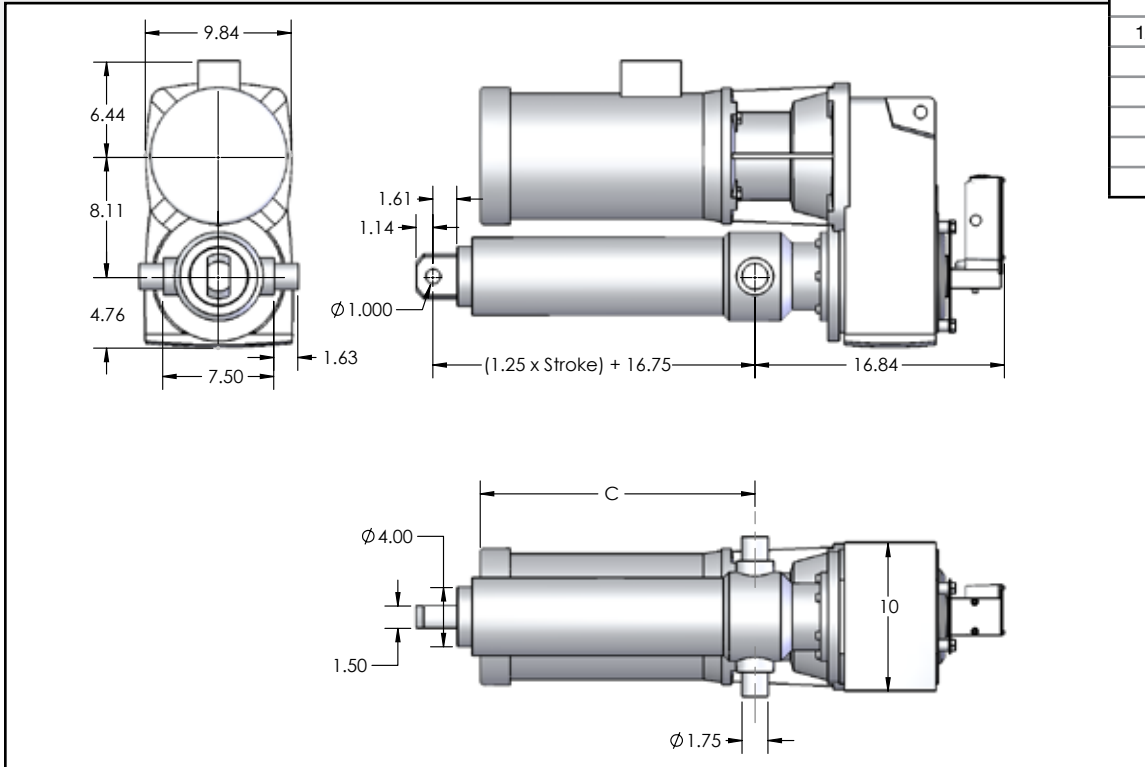
SCN12

12 TON (106.7 kN)



PARALLEL MOTOR

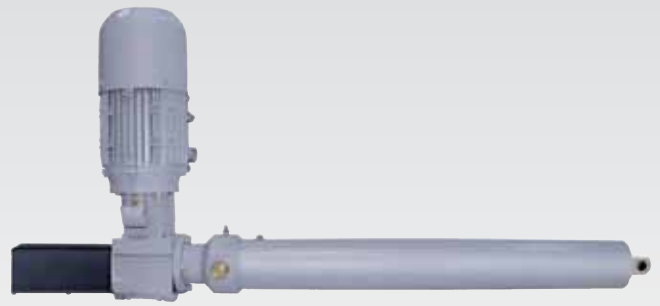
Motor HP	C
1/3	11.84
1/2 - 3/4	13.34
1	13.84
1-1/2	14.84
2	15.84
3	16.07
5	16.52



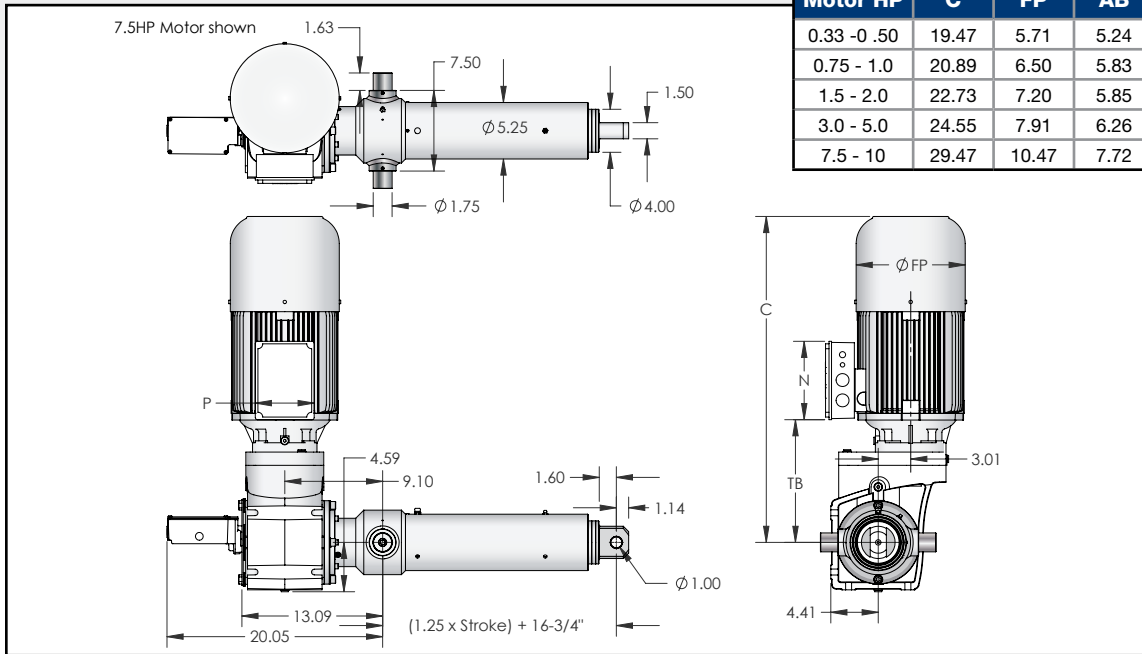
PRODUCT INFORMATION

Part Number	Rated Load		Standard Stroke Lengths		Retracted Length in (mm)	Speed		Max Stroke		Motor	
	lbs	N	in	mm		in/min	mm/min	in	mm	HP	kW
NU12-0470	9697	43,134	6, 12, 18, 24, 36	152, 304, 457, 609, 914	16.75 (425) + (1.25 x Stroke)	180.9	4594	110	2794	5	3.72
NU12-0500	10,316	45,886				170.0	4318	110	2794	5	3.72
NU12-0543	11,204	49,838				156.5	3975	110	2794	5	3.72
NU12-0606	12,503	55,616				140.3	3564	110	2794	5	3.72
NU12-0713	14,711	65,435				119.2	3028	110	2794	5	3.72
NU12-0823	17,187	76,452				102.0	2591	110	2794	5	3.72
NU12-0923	19,044	84,708				92.1	2339	106	2692	5	3.72
NU12-1085	13,432	59,746				78.3	1989	110	2794	3	2.23
NU12-1268	15,697	69,824				67.0	1702	110	2794	3	2.23
NU12-1520	18,817	83,702				55.9	1420	107	2717	3	2.23
NU12-1818	15,004	66,738				46.8	1188	110	2794	2	1.49
NU12-2145	17,703	78,746				39.6	1006	110	2794	2	1.49
NU12-2239	18,479	82,195				38.0	965	108	2743	2	1.49
NU12-2625	21,664	96,363				32.4	822	99	2515	2	1.49
NU12-2643	16,360	72,770				32.2	818	110	2794	1-1/2	1.12
NU12-3234	20,018	89,041				26.3	668	103	2616	1-1/2	1.12
NU12-3681	22,785	101,347				23.1	587	96	2438	1-1/2	1.12
NU12-4074	16,812	74,783				20.9	531	110	2794	1	0.74
NU12-4505	18,590	82,689				18.9	479	108	2743	1	0.74
NU12-9052	24,000	106,753				9.4	239	86	2184	3/4	0.56
NU12-11078	22,857	101,669	7.7	196	96	2438	1/2	0.37			
NU12-15540	21,162	94,128	5.5	139	100	2540	1/3	0.25			

Consult the factory for additional speeds and capacities. Stroke lengths are available in 1 inch increments, please contact the factory for details.



RIGHT ANGLE MOTOR



Motor HP	C	FP	AB	TB	N	P
0.33 - 0.50	19.47	5.71	5.24	9.82	5.20	3.43
0.75 - 1.0	20.89	6.50	5.83	9.90	6.02	4.25
1.5 - 2.0	22.73	7.20	5.85	10.09	6.02	4.25
3.0 - 5.0	24.55	7.91	6.26	10.33	6.02	4.25
7.5 - 10	29.47	10.47	7.72	10.13	7.28	5.47

PRODUCT INFORMATION

Part Number	Rated Load		Standard Stroke Lengths		Retracted Length in (mm)	Speed		Max Stroke		Motor	
	lbs	N	in	mm		in/min	mm/min	in	mm	HP	kW
NL12-0417	12,906	57,408	6, 12, 18, 24, 36	152, 304, 457, 609, 914	16.75 (425) + (1.25 x Stroke)	203.8	5177	110	2794	7-1/2	5.59
NL12-0512	15,846	70,486				166.0	4217	110	2794	7-1/2	5.59
NL12-0639	19,777	87,970				133.0	3379	105	2667	7-1/2	5.59
NL12-0718	14,814	65,897				118.4	3007	110	2794	5	3.73
NL12-0885	18,260	81,224				96.0	2440	109	2769	5	3.73
NL12-0981	20,241	90,035				86.6	2201	103	2616	5	3.73
NL12-1128	23,274	103,527				75.4	1914	96	2438	5	3.73
NL12-1250	15,475	68,834				68.0	1727	110	2794	3	2.24
NL12-1379	17,072	75,938				61.6	1566	110	2794	3	2.24
NL12-1542	19,089	84,914				55.1	1400	107	2718	3	2.24
NL12-1708	21,144	94,055				49.8	1264	101	2565	3	2.24
NL12-1884	15,549	69,165				45.1	1146	110	2794	2	1.49
NL12-1917	15,821	70,376				44.3	1126	110	2794	2	1.49
NL12-2114	17,447	77,608				40.2	1021	110	2794	2	1.49
NL12-2259	18,644	82,932				37.6	956	108	2743	2	1.49
NL12-2464	20,336	90,457				34.5	876	103	2616	2	1.49
NL12-2534	20,913	93,027				33.5	852	101	2565	2	1.49
NL12-2765	17,115	76,131				30.7	781	110	2794	1-1/2	1.12
NL12-2838	17,567	78,141				30.0	761	110	2794	1-1/2 *	1.12*
NL12-3185	19,715	87,695				26.7	678	105	2667	1-1/2 *	1.12*
NL12-3504	21,689	96,478				24.3	616	100	2540	1-1/2	1.12
NL12-3932	16,226	72,175				21.6	549	110	2794	1	0.75
NL12-4344	17,926	79,738				19.6	497	110	2794	1	0.75
NL12-4692	19,362	86,126				18.1	460	106	2692	1	0.75
NL12-5264	21,722	96,625				16.1	410	99	2515	1	0.75
NL12-5968	18,470	82,161				14.2	362	108	2743	3/4	0.56
NL12-6696	20,724	92,183				12.7	322	102	2591	3/4	0.56

Consult the factory for additional speeds and capacities. Stroke lengths are available in 1 inch increments, please contact the factory for details. *C-face only

www.duffnorton.com • Ph: (800) 477-5002 • Fax: (704) 588-1994